



SERVICE BULLETIN

Classification: EC04-007a	Reference: NTB04-027a	Date: March 24, 2004
------------------------------	--------------------------	-------------------------

2004 MAXIMA AND QUEST (WITH 5 SPEED A/T ONLY); MIL ON WITH DTC P0171 / P0174 / P1273 / P1283 A/F SENSOR / FUEL INJECTION SYSTEM

This version of NTB04-027 amends Chart A in the Service Procedure.
Please discard all paper copies of the earlier version.

APPLIED VEHICLE: 2004 Maxima (A34) with 5 speed A/T only
2004 Quest (V42) with 5 speed A/T only

NOTE: Models with 4 speed A/T or 6 speed M/T are not covered
by this TSB. For those vehicles, refer to NTB04-025.

IF YOU CONFIRM:

The following DTC code(s) are stored:

- DTC P0171 / P1273

OR

- DTC P0174 / P1283

Then this bulletin applies.

NOTE: This bulletin does NOT apply if you have P0171 and P0174 together or you have P1273 and P1283 together.

ACTIONS:

- A. Make sure the engine does not have any intake or exhaust leaks.
- B. Replace the Air/Fuel Sensor (if no intake or exhaust leaks are found).
 - Codes P0171 and/or P1273; replace Bank 1 sensor.
 - Code P0174 and/or P1283; replace Bank 2 sensor.
- C. Check to see if reprogramming is needed (Page 4).
- D. Perform reprogramming by “special ID lookup”—a special process for this TSB only (Page 6).

Nissan Bulletins are intended for use by qualified technicians, not 'do-it-yourselfers'. Qualified technicians are properly trained individuals who have the equipment, tools, safety instruction, and know-how to do a job properly and safely. NOTE: If you believe that a described condition may apply to a particular vehicle, DO NOT assume that it does. See your Nissan dealer to determine if this applies to your vehicle.

IMPORTANT: The purpose of "ACTIONS" (on page one) is to give you a quick idea of the work you will be performing. You **MUST** closely follow the entire Service Procedure (starting on page 3) as it contains information that is essential to successfully completing this repair.

PARTS INFORMATION

DESCRIPTION	PART #	QUANTITY
Air Fuel Sensor (Bank 1 or Bank 2)	22693-7Y020	1

CLAIMS INFORMATION

Submit a Primary Failed Part (PP) line claim using the following claims coding:

DESCRIPTION	PFP	OP CODE	SYM	DIA	FRT
RPL One Air/Fuel Ratio Sensor	(1)	DE53AA	HD	32	(2)

- (1) Reference the Parts Information table and use the indicated sensor P/Ns as the PFP.
- (2) Reference the current Nissan Warranty Flat Rate Manual and use the indicated FRT.

AND, IF REQUIRED

DESCRIPTION	PFP	OP CODE	SYM	DIA	FRT
Reprogram ECM per TSB		DE98AA			0.5 hrs

- 1. FRT allows adequate time to access DTC codes and reprogram ECM. No other diagnostic procedures subsequently required – do NOT claim any Diagnostic Op Codes with this claim.

AND, IF REQUIRED

DESCRIPTION	PFP	OP CODE	SYM	DIA	FRT
Reprogram TCM		JE99AA			0.6 hrs

SERVICE PROCEDURE

Step A: Make Sure The Engine Does Not Have Any Intake or Exhaust Leaks.

- Use the EC section of the appropriate Service Manual (ESM) and ASIST for intake and exhaust system diagnostic information.
- If no intake or exhaust system leaks are found, go to Step B.

Step B: Replace The Air/Fuel Sensor (Bank 1 or Bank 2)

- The A/F Sensor is located in the exhaust manifold, in front (upstream) of the catalyst.

For DTC code(s) P0171 and/or P1273:

- Replace A/F Sensor—Bank 1.
- It's located on the side of the engine that is towards the **rear** of the vehicle (see Figure 1).

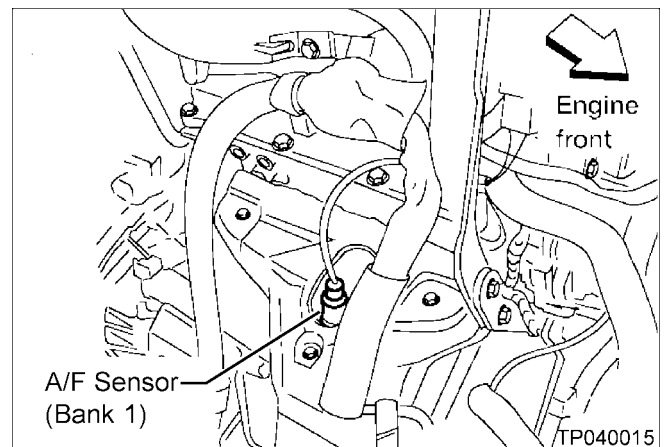


Figure 1

For DTC code(s) P0174 and/or P1283:

- Replace A/F Sensor—Bank 2.
- It's located on the side of the engine that is towards the **front** of the vehicle (see Figure 2).

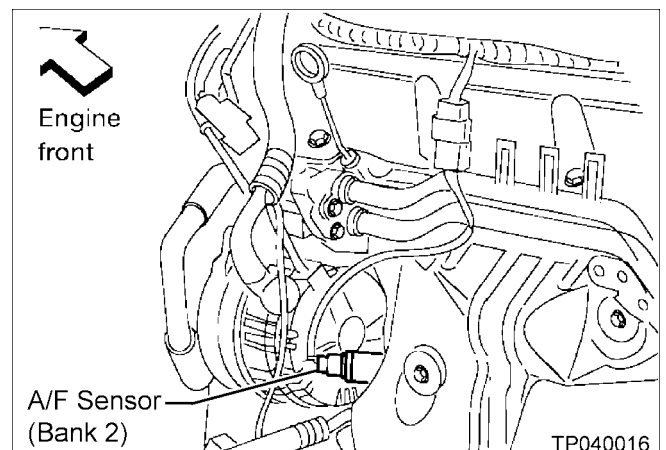


Figure 2

Step C: Check to See if Reprogramming is Needed

1. Check your vehicles ECM Part Number:

- With CONSULT-II "ON", print the Freeze Frame data as follows:

START(Nissan) >> **ENGINE** >> **Self-DIAG Results** >> **F.F. Data** >> **PRINT**

- Figure 3 is an example of the F.F. Data printout.
- The Freeze Frame data that you've printed contains the ECM Part Number (P/N).
- You'll use this ECM P/N to see if reprogramming is needed.

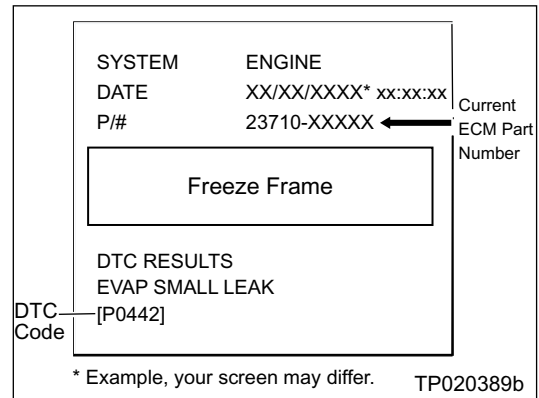


Figure 3

2. Compare your vehicle's ECM P/N (step 1 Figure 1) to those shown under Current ECM P/N in **Chart A** below:
- If it's in that column, reprogramming is needed.

IMPORTANT: To get the correct reprogramming data for this DTC incident, **you must:**

1) Match your vehicle to the Vehicle Configuration

AND

Current ECM P/N

2) Then select the correct ID code

Chart A

Vehicle	Vehicle Configuration	Current ECM Part Number : 23710-	ASIST ECM Data ID Code
Maxima	5 speed A/T	8Y000, -8Y001, -8Y002, -8Y003,	020401
		-8Y004, -8Y006	020402
	5 speed A/T with TCS	8Y010, -8Y011, -8Y012, -8Y013,	020403
		-8Y014, -8Y016	020404
	4 speed A/T with TCS	This TSB does not apply. See NTB04-025	—
	6 speed M/T	This TSB does not apply. See NTB04-025	—
6 speed M/T with TCS	This TSB does not apply. See NTB04-025	—	
Quest	5 speed A/T	CK010, -CK011, -CK012,	020406
		CK013	020407
	4 speed A/T	This TSB does not apply. See NTB04-025	—

A. If your vehicle's ECM P/N **matches** a P/N in the chart above:

- Reprogramming is needed. **Go to step D, Perform Reprogramming** (next page).

B. If your vehicle's ECM P/N **does not match** a P/N in the chart above:

- **Reprogramming is not needed.** You are finished with repairs in this bulletin.

Step D: Perform Reprogramming by Special ID Lookup

1. Perform **reprogramming using the special “ASIST ECM DATA ID CODE” (ECM ID Code)** from Chart A on page 5.

IMPORTANT:

- a. You must use the ID Code to get the reprogramming data for this incident.
- b. This incident may require reprogramming for both **ECM and TCM**.
- c. For this incident, ASIST will give you only the data needed for your vehicle when you enter the ECM ID Code.
 - If ASIST only gives you ECM data, perform reprogramming for ECM only.
 - If ASIST gives you both ECM and TCM data, you must perform reprogramming for both.

ECU REPROGRAMMING PROCEDURES; ECM and (if needed) TCM

Vehicle ECU Reprogramming Overview for This Incident

- There are six basic steps.

Step 1: Download reprogramming data (transfer it) from ASIST into CONSULT-II.

Step 2: Preparation for reprogramming.

Step 3: Reprogram the ECM.

Step 4: ECM reprogramming “Wrap-up”.

Step 5: Reprogram the TCM (if needed).

- This is needed only if ASIST gives you TCM data when the I.D. code is entered.

Step 6: TCM reprogramming “Wrap-up”.

- This is needed only if ASIST gives you TCM data when the I.D. code is entered.

◆ If you are familiar with special ECM and TCM reprogramming using ECM I.D. Code entry:

- Review the following steps—starting on page 7.
- Use them as a “Quick Reference” for ECM and—if needed—TCM reprogramming.

◆ If you are not familiar with special **ECM** Reprogramming, click here:

- This will link you to the "SPECIAL ECM REPROGRAMMING PROCEDURE FOR ECM I.D. ENTRY " general procedure.

- Or refer to it in the print copy of this bulletin.

◆ If you are not familiar with special **TCM** Reprogramming, click here:

- This will link you to the "SPECIAL TCM REPROGRAMMING PROCEDURE FOR I.D. ENTRY " general procedure.

- Or refer to it in the print copy of this bulletin.

Step One: Download (Transfer) Data From ASIST Into CONSULT-II

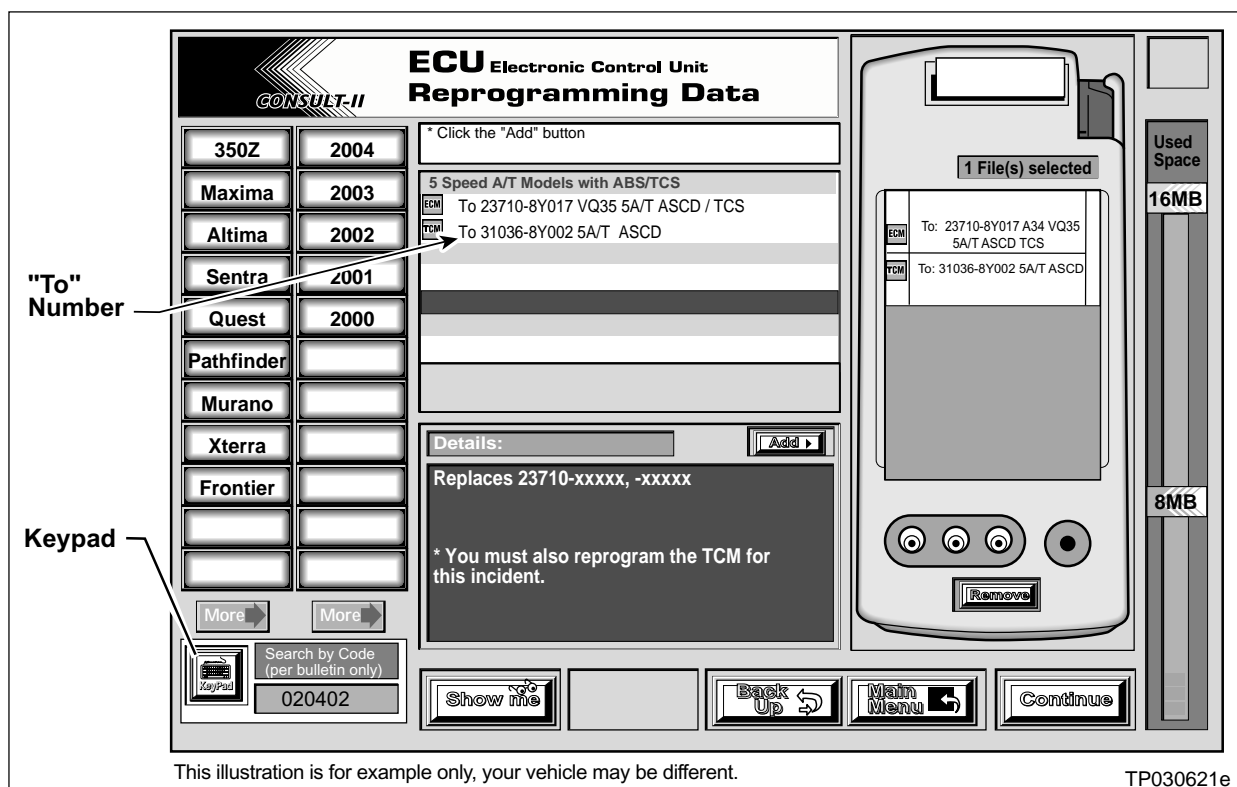


Figure A

1. Click on the Keypad button (see Figure A).
 - A Keypad will pop up, left side of screen.
 2. Using the digit keys on the keypad, enter the correct **ASIST ECM DATA ID CODE**.
 - Go back to Chart A on page 5 of this bulletin.
 3. Then click the "Continue" button on the keypad.
 - Data will appear in the middle of the ASIST screen.
 4. Now you'll add this reprogramming data to the "File(s) selected" list. This list is on the right side of the ASIST screen (Figure A, above).
 - A. Click on the "To" number (it's in the center of the ASIST screen).
 - B. Then click on the "Add" button.
- IMPORTANT:**
- ASIST will display only the data you need for this incident.
 - It may give you ECM data only, or both ECM and TCM data.
 - You must add all data that appears in step 3 above to the "File(s) selected" list.
5. Write the "To" number(s) on the Repair Order. You will need this later in the reprogramming process.
 6. Click the "**CONTINUE**" button to start the CONSULT-II setup.

Step Two: Preparation for Reprogramming

1. Connect a battery charger to the vehicle's battery.
 - Set the charger to a low charger rate (trickle charge).

CAUTION: For number 2 below and number 3 on the next page, **DO NOT** connect the CONSULT-II AC power supply.

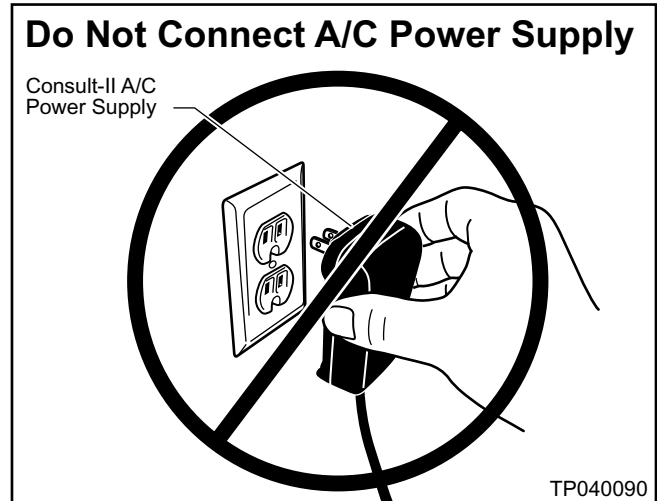


Figure B

2. Press **SUB MODE** (see Figure C) then:
 - a. From the listed items, find and select **BATTERY CHARGE**.

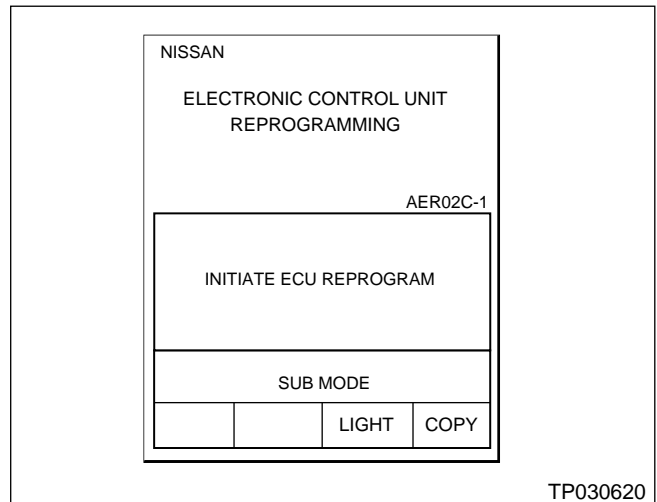


Figure C

3. Check the CONSULT-II's "Charger Input" reading (see Figure D).

NOTE:

- **"Battery Voltage"** is the voltage level of CONSULT-II's battery.
- **"Charger Input"** is the voltage level of the vehicle's battery. **(It must be above 12 volts.)**

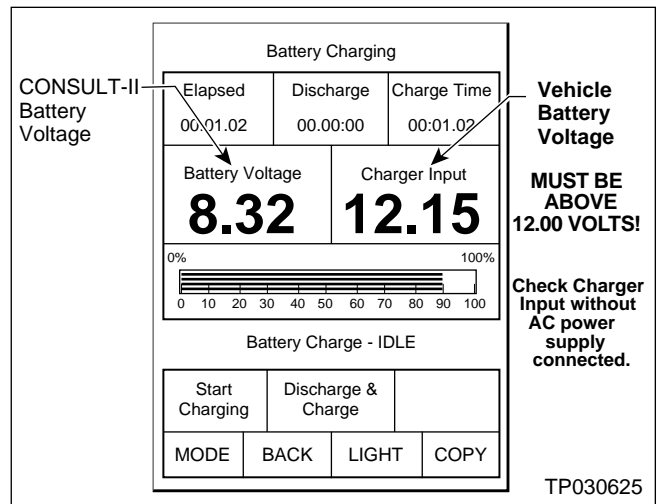


Figure D

CAUTION: If the "Charger Input" is below 12 volts:

- A list of items to check when "Charger Input" voltage is below 12V is contained in the "Special ECM Reprogramming Procedure For ECM ID Entry" general procedure. Click here to link to it.
- Or refer to it in the print copy of this bulletin.

Step Three: Reprogram the ECM

- If you are not familiar with special **ECM** Reprogramming, click here:
- This will link you back to a general procedure called "SPECIAL ECM REPROGRAMMING PROCEDURE FOR ECM I.D. ENTRY."
- Or refer to it in the print copy of this bulletin.

Step Four: ECM Reprogramming “Wrap-up”

1. Turn the ignition switch "OFF" and CONSULT-II “OFF”.
2. Wait more than 10 seconds, then;
 - a. Turn the ignition switch "ON" for 2 second, then
 - b. Turn the ignition switch "OFF" again for 10 seconds (see Figure D).
 - This will reset ECM “self learned” Data.

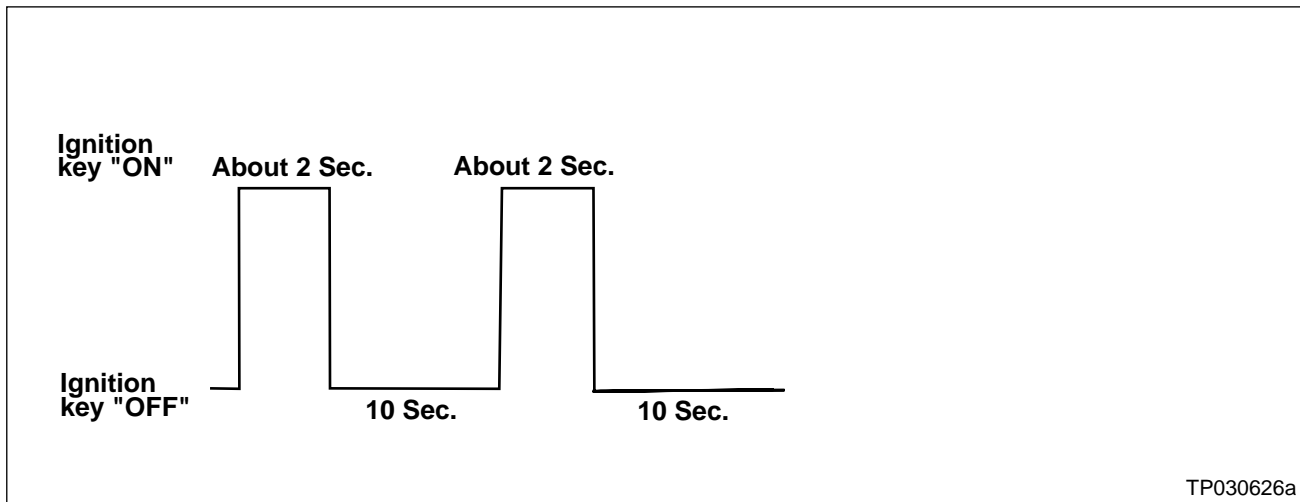


Figure E

3. Start the engine and check the idle speed.
 - If idle speed is too low, perform “Idle Air Volume Learning” (IAVL). See the appropriate Service Manual (ESM) for this procedure.

NOTE: If the engine will not idle, hold the engine RPM at about 2000, then slowly bring it down to an idle. IAVL can now be performed.
4. Confirm the engine is operating normally.
5. Make sure the MIL is OFF.
 - If it's still ON, use CONSULT-II with the Diagnostic (red/white) Card to erase any DTC's that may have stored during the reprogramming procedure.

Step Five: Reprogram the Vehicle TCM (if needed)

- This is needed only if ASIST gave you TCM data when the I.D. code was entered.
- You're ready to do TCM reprogramming when you completed steps **One** and **Two**.
- If you are not familiar with special **TCM** Reprogramming, click [here](#). It will link you to a general procedure called "SPECIAL TCM REPROGRAMMING PROCEDURE FOR I.D. ENTRY." Or you can refer to it in the print copy of this bulletin.

Step Six: TCM Reprogramming "Wrap-up"

1. Turn the ignition and CONSULT-II OFF.
2. Disconnect CONSULT-II from the vehicle.
3. Start the engine and make sure the MIL is OFF.
 - If it's still ON, use CONSULT-II with the Diagnostic (red/white) Card to erase any DTC's that may have stored during the reprogramming procedure.
4. Test-drive the vehicle and make sure the transmission operates correctly in all modes.
 - See the AT section of the appropriate Service Manual for shift schedule specifications.

